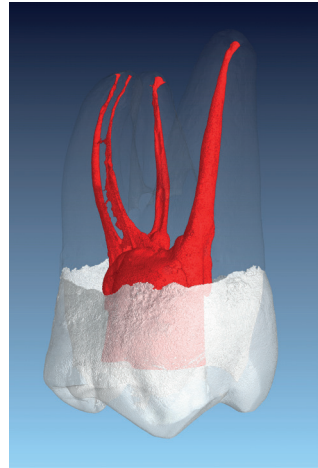
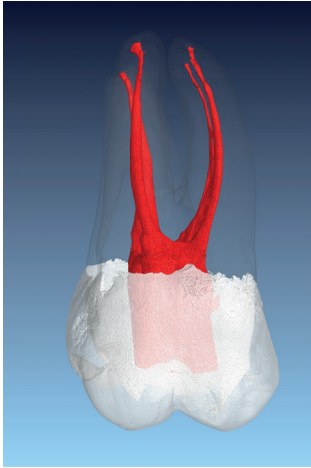


# RepliDens®

## the endo education tool

### 02.2.1 - maxillary molar



level of difficulty:	easy
canals:	4
key feature:	separate mb 2
working lengths:	mesiobuccal 1 and 2: 20.5 mm distobuccal: 20.5 mm palatal: 20.5 mm
working procedure:	use hand or rotary instrument system of choice* negotiate canals using an ISO 10 size hand file prepare glide path as indicated irrigate between instruments use water or alcohol for irrigation enjoy!

\*If you use a rotary instrument system, use a torque-controlled motor with settings provided by the manufacturer of the respective system.