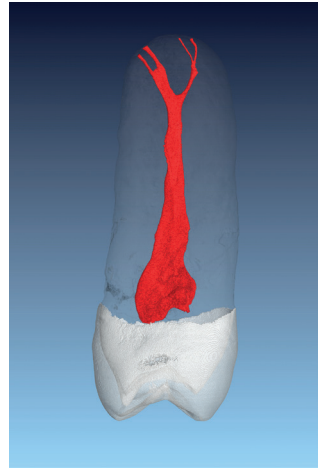


# RepliDens®

## the endo education tool

### 06.2.1 - maxillary premolar



level of difficulty:	medium - advanced
canals:	2
key feature:	apical delta/deep split
working lengths:	buccal: 23.5 mm palatal: 23.5 mm
working procedure:	use hand or rotary instrument system of choice* negotiate canals using a pre-bent ISO 10 size hand file prepare glide path as indicated irrigate between instruments use water or alcohol for irrigation enjoy!

\*If you use a rotary instrument system, use a torque-controlled motor with settings provided by the manufacturer of the respective system.